

## 40E Series - Endless Design Curved Glass - Fish and Poultry

• PRODUCT SPECIFICATIONS SHEETS



- Cases are designed to operate at 75 degrees Fahrenheit and 55% relative humidity

**Self-Contained**  
**Remote**

**SC-CFS40E-4C**  
**R-CFS40E-4C**

**SC-CFS40E-6C**  
**R-CFS40E-6C**

**SC-CFS40E-8C**  
**R-CFS40E-8C**

**Length with (2) ends**

51"

75"

99"

**Length without ends**

48"

72"

96"

**Height with ends**

53"

53"

53"

**Height without ends**

52-1/2"

52-1/2"

52-1/2"

**Depth with ends**

40"

40"

40"

**Depth without ends**

38-7/8"

38-7/8"

38-7/8"

**Endless Design**

YES

YES

YES

(Dimensions are +/-1/4")

- Specification subject to change without notice

### 40E Series - Endless Design Curved Glass - Fish and Poultry

## Standard Specifications and Optional Features

<p><b>CONSTRUCTION</b>          UL Classified to ANSI/NSF 7          Foamed in place CFC free foam          Heavy gauge steel super structure          Single duty display          Endless design allows for continuous line up          Drain is included for cleaning          Extra wide double bend curved glass (<i>enhances product display</i>)</p>	<p><b>FINISHES</b>          Grey finish extrusion on doors and door tracks          Designer White or Black exterior front and ends Trim          Stainless steel heavy gauge top- 13-3/4" W          Rear of unit is stainless steel brush finish at top          Bottom rear is designer white aluminum</p>
<p><b>INTERIOR</b>          White interior includes ends          Full length white aluminum floor (<i>main deck area</i>)          Air insulated baffle (<i>prevents moisture from dripping into display area</i>)          Stainless steel individual ice pans</p>	<p><b>REFRIGERATION</b>          Copevap system eliminates need for condensate pan          R134a expansion valve system          Gravity coil located at inside top of unit          Self contained system          Temperature and defrost electronically controlled          Remotes available</p>
<p><b>EXTERIOR</b>          Double pane rear removable doors          Rear doors use the McGlide door system** (<i>for easy access</i>)          Removable front panel          Removable rear grille for easy servicing          1-1/2" removable end panels          Front bumper 2"- gray</p>	<p><b>LIGHTING</b>          1 Row of T8 lighting at top of unit</p> <p><b>**McGlide door system is built with a extra tight door jam which helps seal the door tight when closed and prevents cold air from leaving the unit saving energy costs.</b></p>
<p><b>ELECTRICAL REQUIREMENTS</b>          115V/60Hz/1Ph          Hard wired          UL/CUL listed          115V-12AMP general purpose receptacle (<i>wired separately</i>)</p>	<p><b><i>Important Note: All refrigerated cases are designed to operate in an environment of 75 degrees and 55% relative humidity.</i></b></p> <p><b><i>Important Note: Product must be cooled before being displayed within the case.</i></b></p> <p><b><i>Ice Required (32 lbs per foot)</i></b></p>

### OPTIONAL FEATURES

<p>Scale stand          Paper cutter          Stainless steel, laminate, or paint          Mirrored doors          Stainless steel mezzanine shelf</p>	<p>Lights for mezzanine shelf          Drop work shelf          Door locks          Digital thermometer          Ice barrier - 4"</p>
--	---



## 40E Series - Endless Design Curved Glass - Fish and Poultry

### Technical Data

Model #	Self contained	SC-CFS40E-4C	SC-CFS40E-6C	SC-CFS40E-8C
	Remote	R-CFS40E-4C	R-CFS40E-6C	R-CFS40E-8C
Length with (2) ends		51"	75"	99"
Length without ends		48"	72"	96"
Height with ends		53"	53"	53"
Height without ends		52-1/2"	52-1/2"	52-1/2"
Depth with ends		40"	40"	40"
Depth without ends		38-7/8"	38-7/8"	38-7/8"
Endless design (Dimensions are +/- 1/4")		YES	YES	YES
Operating temperature		36°F to 40°F	36°F to 40°F	36°F to 40°F
Refrigerant (expansion valve)	Self contained	R134a	R134a	R134a
Compressor size- HP	Self contained	1/4	1/4	1/3
Electronic control settings @ 75°F, 55%RH		CUT IN 40	40	40
		CUT OUT 36	36	36
Defrost per day (24 hours)	Air Defrost	1 per day	1 per day	1 per day
BTU's at +20°F Evap. Temp.	Remote	820	1230	1640
Voltage		115V	115V	115V
Amperage	Self Contained	6.0A	6.4A	9.1A
Amperage- lights only	Remote	0.8A	1.3A	1.6A
Cord and plug		No	No	No
Exterior color		White	White	White
Interior color		Stainless	Stainless	Stainless
Inside end panels		White	White	White
Floors		White	White	White
# of top doors		2	2	4
Door size				
# of coils		1	1	1
Bottom storage		No	No	No
Front glass		Curved	Curved	Curved
Main deck shelf		N/A	N/A	N/A
Shelf size		23-1/2"X32-5/8"	23-1/2"X32-5/8"	23-1/2"X32-5/8"
Cubic capacity (ft <sup>3</sup> )		24.5	36.8	49
Mezzanine- shelf		Optional	Optional	Optional

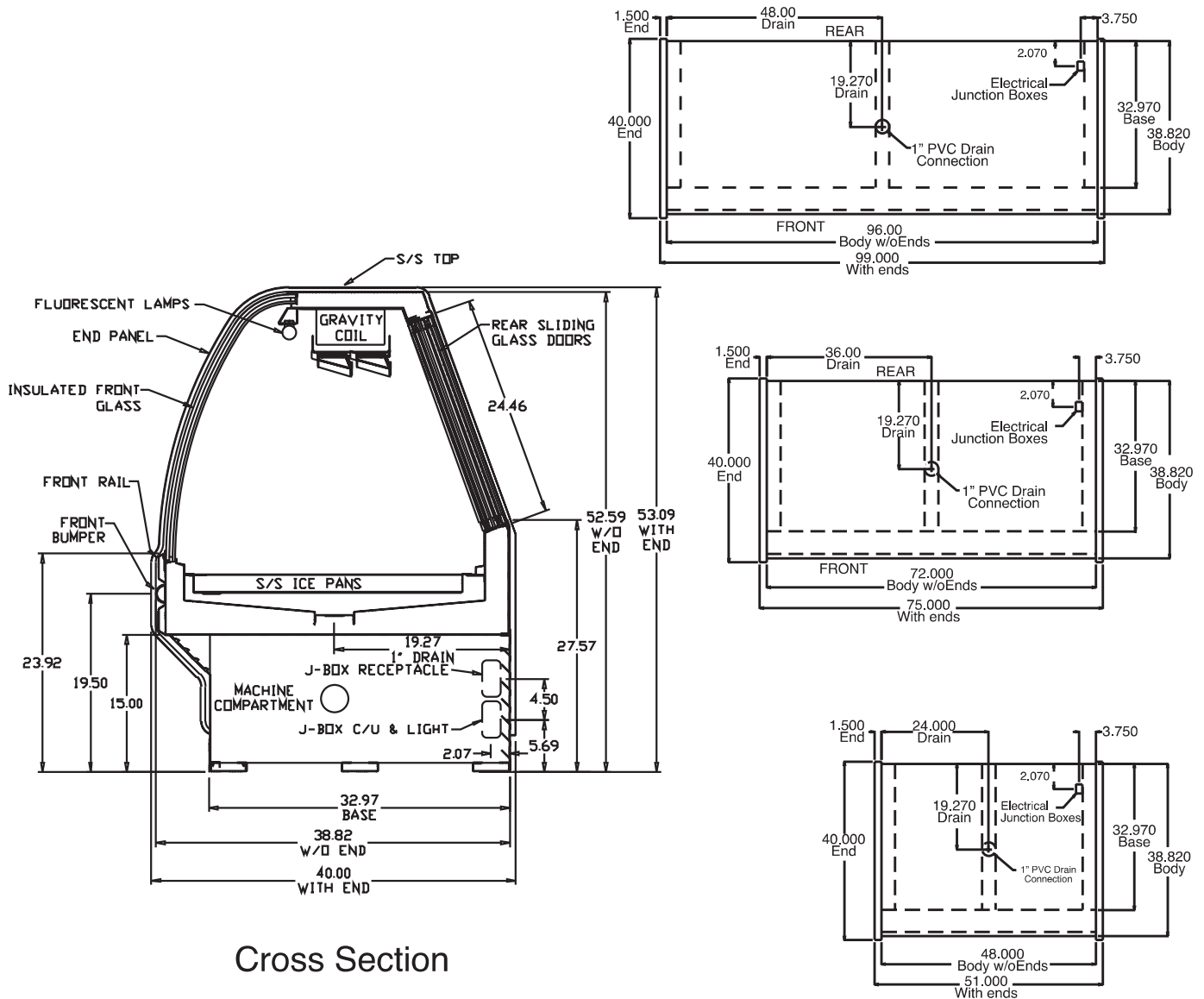
### SHIPPING INFORMATION

Height		58"	58"	58"
Depth		44"	44"	44"
Length		61"	87"	109"
Gross weight	Self contained	530#	741#	897#
	Remote	497#	693#	832#
Cubic feet		89ft <sup>3</sup>	128ft <sup>3</sup>	164ft <sup>3</sup>

- Cases are designed to operate at 75 degrees Fahrenheit and 55% relative humidity
- Cases are equipped with washout drains; check your local building codes for connection requirements.
- Specification subject to change without notice

## 40E Series - Endless Design Curved Glass - Fish and Poultry

### Technical Data • Side View • Plan View



Cross Section

Plan Views